

---

**TB8000** base station

TN-1187-AN

Configuring the TB8100  
with the TA2444-01 and  
a Single PMU



# Tait Contact Information

---

**Tait Radio Communications  
Corporate Head Office**

Tait Electronics Limited  
P.O. Box 1645  
Christchurch  
New Zealand

For the address and telephone number of regional offices, refer to the TaitWorld website:

Website: <http://www.taitworld.com>

**Technical Support**

For assistance with specific technical issues, contact Technical Support:

E-mail: [support@taitworld.com](mailto:support@taitworld.com)

Website: <http://support.taitworld.com>

# Abbreviations and Definitions

---

<b>Abbreviation</b>	<b>Description</b>
LHPA	Local High Priority Alarm
LLPA	Local Low Priority Alarm
PMU	Power Monitor Unit

# Contents

---

- 1 Introduction . . . . . 5**
  
- 2 Procedure . . . . . 6**
  - 2.1 Overview . . . . . 6
  - 2.2 Create the Base Station 2 Configuration File . . . . . 6
  - 2.3 Custom Input LHPA . . . . . 6
  - 2.4 Alarm Control . . . . . 7
  - 2.5 Auxiliary Power . . . . . 8
  - 2.6 Save and Load Configuration File . . . . . 8
  
- 3 Publication Information . . . . . 9**

# 1 Introduction

---

This application note describes the configuration required for a single PMU, dual base station fitted with a TA2444-01 Change-over Module. It covers TB8100 Service Kit Task Manager configuration of the base station with no PMU connected.

Task Manager is the 'brains' of the base station. When something changes, Task Manager carries out actions based on the intelligence contained in its list of tasks. Each task defines what you want the base station to do in response to a particular event.

In the case of a dual base station with a TA2444-01 Change-over Module, the active and standby TB8000 base stations in the system each has a dedicated configuration file for the TA2444-01 Task Manager software, to monitor its own status and transmit a specific heartbeat signal to the Task Manager of the other base station.

When there is a single PMU fitted in the system, the Task Manager for the base station that is not connected to a PMU must have all PMU alarms turned off.

This application note is intended for System Integrators.

Refer to the TA2444-01 Change-over Module Service Manual for further information.

## 2 Procedure

### 2.1 Overview

In dual base station systems with single PMUs, only one reciter (base station 1) monitors the PMU. This means that each reciter needs a different Task Manager script programmed into it.

The original QA2444A8xx.tc8 is programmed into the reciter for base station 1, so that it monitors the PMU. A modified version of QA2444A8xx.tc8 must be programmed into the reciter for base station 2, so that it does not try to monitor a PMU.

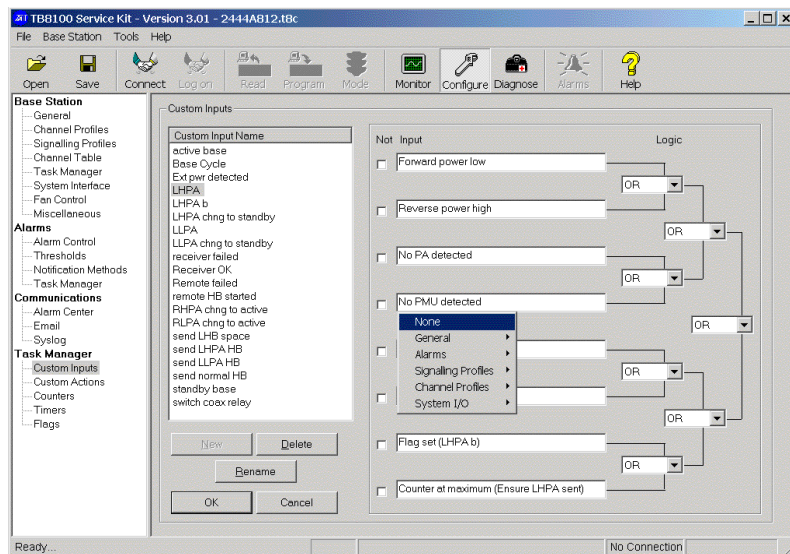
While there are additional PMU alarms to the ones in this document, they do not cause problems if there is no PMU connected.

### 2.2 Create the Base Station 2 Configuration File

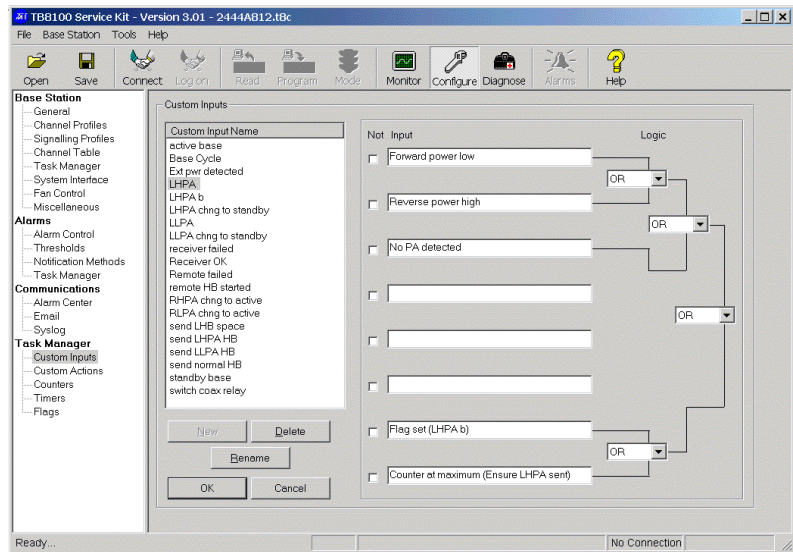
1. Open QS2444A8xx.tc8 in the TB8100 Service Kit.
2. Save the file as QA2444A8xx\_NO\_PMU.tc8.
3. Select Configure > Base Station > General, and change the base station name to “Changeover BS no PMU”.

### 2.3 Custom Input LHPA

1. Select Configure > Taskmanager > Custom inputs > LHPA.
2. Left click on “No PMU detected” and bring up the list box, then select on “None” to delete the task “No PMU detected”.

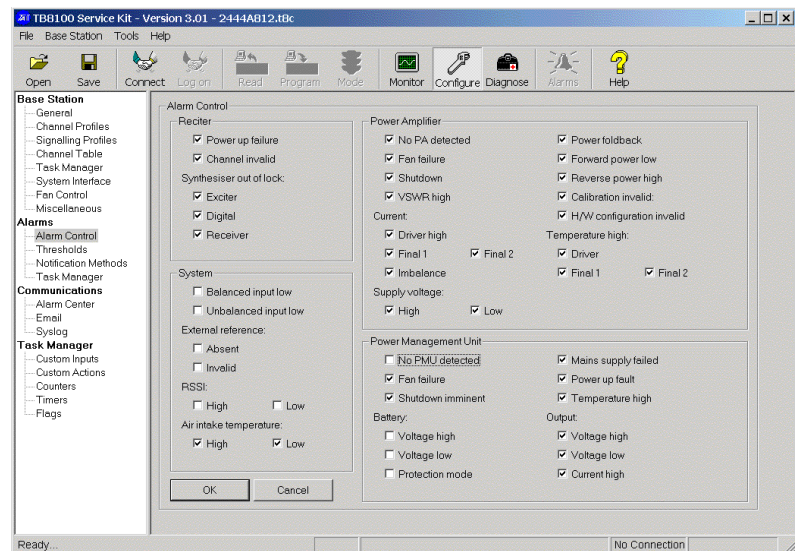


- Repeat the process for “PMU output Fault” and “PMU power up fault” so that all three PMU inputs are turned off.



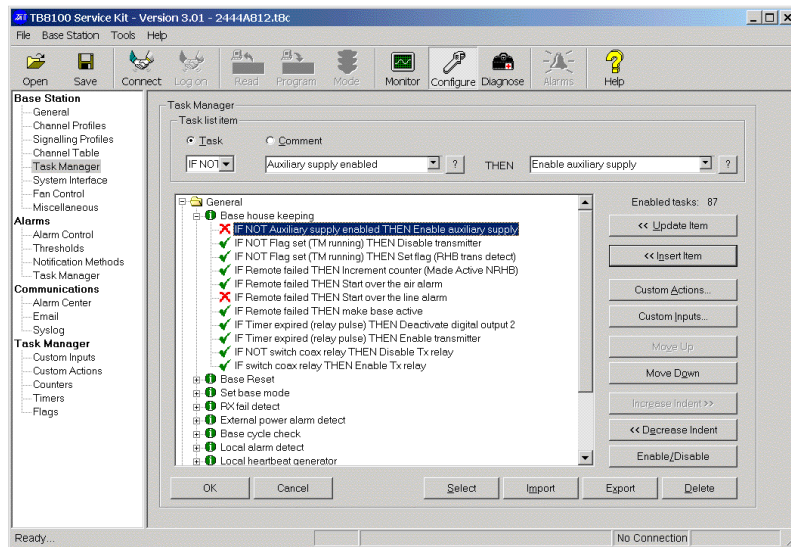
## 2.4 Alarm Control

- Select Configure > Alarms > Alarm Control.
- Uncheck the “No PMU detected” box. This will disable all PMU alarm monitoring..



## 2.5 Auxiliary Power

1. Select Configure > Taskmanager > General > Base house keeping.
2. Expand “Base house keeping”.
3. Select “IF NOT Auxiliary supply enabled THEN Enable auxiliary supply”.
4. Click on “Enable/Disable” and the green tick to the left changes to a red cross.



## 2.6 Save and Load Configuration File

5. Resave the file QA2444A8xx\_NO\_PMU.tc8.
6. Press F5 to put the base station in Standby mode.
7. Click Program. The Programming dialog box appears and indicates progress.  
When all the configuration information has been downloaded, it is programmed into the base station. When the Service Kit receives confirmation of this, it closes the dialog box.
8. Press F6 to return the base station to Run mode. It is now operational.



# 3 Publication Information

---

## Compliance Issues

None

## CSO Instruction

CSOs please inform registered Systems Integrators that this document is available.

## Issuing Authority

Issued by: Angela Maslin  
TCI Technical Publications

## Confidentiality

Confidential - This message or document contains proprietary information intended only for the person(s) or organisation(s) to whom it is addressed. All Recipients are legally obliged to not disclose Tait technological or business information to any persons or organisations without the written permission of Tait.

## Distribution Level

System Integrators and Tait Only.

## Document History

Version	Publication Date	Author
1.0	June 2006	A Maslin, S Thomas

